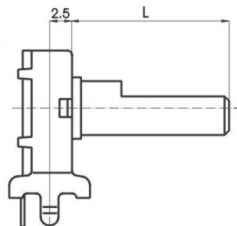


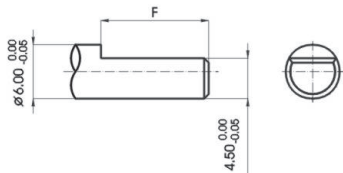
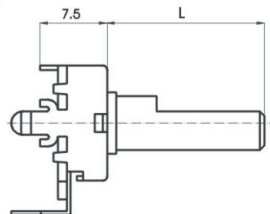
# R1201N

## INSULATED SHAFT

Horizontal

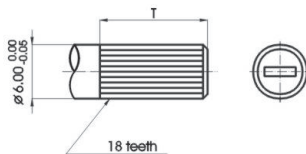


Vertical



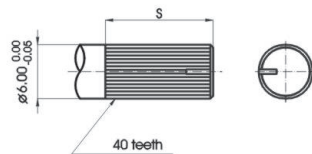
**F TYPE:**

X	F	A	G	E	B	C	D	Y
L	7.5	12.5	12.5	15.5	17.5	22.5	27.5	13.5
F	5	7	8	12	12	12	12	12



**T TYPE:**

X	0	1	2	3	4	5	6
L	7.5	10.5	12.5	17.5	22.5	27.5	32.5
T	5	7	7	12	12	12	12



**S TYPE:**

X	P	Q	R	S	T	U
L	7.5	12.5	17.5	22.5	27.5	32.5
T	5	7	7	12	12	12

## Mechanical characteristics: 機械的性能

R1201N

R12B1N

Total rotational angle 全迴轉角度	300°±10°	
Rotational torque 迴轉扭力	3~20mN.m (31~204gf.cm)	2~25mN.m (20~255gf.cm)
Rotation stopper strength 止迴轉強度	0.5 N.m (5kgf.cm)	
Push pull strength 軸推拉強度	70N (7kgf) max.	80N (8kgf) max.
Click position C.C. 位置	Center click	
Click torque C.C. 扭力	5~20mN.m (51~204gf.cm)	

## Electrical characteristics: 電氣的性能

Total resistance 總阻值	(B) 500Ω ~1MΩ (other than B) 5KΩ ~500KΩ	1KΩ ~500KΩ
Total resistance tolerance 總阻值容許差	±20% (more than 1MΩ ±30%)	±20%
Rated power 定格電力	B:0.15W other than B:0.08W	0.05W
Max. operating voltage 最高使用電壓	B:150V AC/10V DC other than B: 100V AC/10V DC	30V AC/DC
Resistance taper 阻值線性	A,B,C	B
Residual resistance 殘留阻值	R ≥ 250KΩ      0.1% max. of total resistance 250KΩ > R > 10KΩ      20Ω max. 10KΩ ≥ R                      10Ω max.	
Insulation resistance 絕緣抵抗	more than 100MΩ at DC 500V	more than 100MΩ at DC 250V

## Durability: 耐久的性能

Rotational life 迴轉壽命	10,000 cycles	10,000 cycles
-------------------------	---------------	---------------